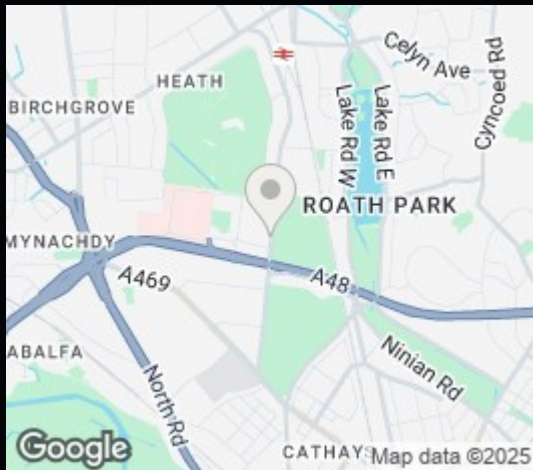




173, Allensbank Road,
Heath,
Cardiff,
CF14 3QY

3 Bed House - End Terrace

£1,300 PCM



A well presented traditional three bedroom end of terrace property just a short walk from the University Hospital Wales. The accommodation includes two reception rooms, shower room and galley style kitchen to the ground floor with a further family bathroom and three bedrooms to the first floor. Large SW facing rear garden with gated parking area off the rear lane (garage is NOT included). Unfurnished with kitchen appliances and fitted wardrobes to all bedrooms. Permit parking to front. Gas central heating. Council Tax Band F. EPC Rating E. Available July 2025 for initial twelve month term.



3



2



2



E

£1,300 PCM

CONTACT

EMAIL

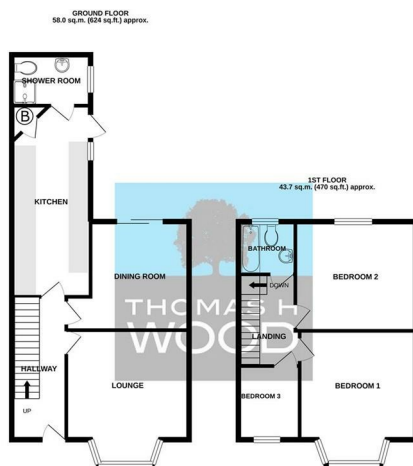
lettings@thomashwood.com

TELEPHONE

02920 626252

WEBSITE

Energy Efficiency Rating		
	Current	Potential
Very energy efficient - lower running costs		
(92 plus) A		
(81-91) B		
(69-80) C		76
(55-68) D		
(39-54) E	54	
(21-38) F		
(1-20) G		
Not energy efficient - higher running costs		
England & Wales	EU Directive 2002/91/EC	



TOTAL FLOOR AREA: 103.7 sq.m. (2388 sq.ft.) approx.